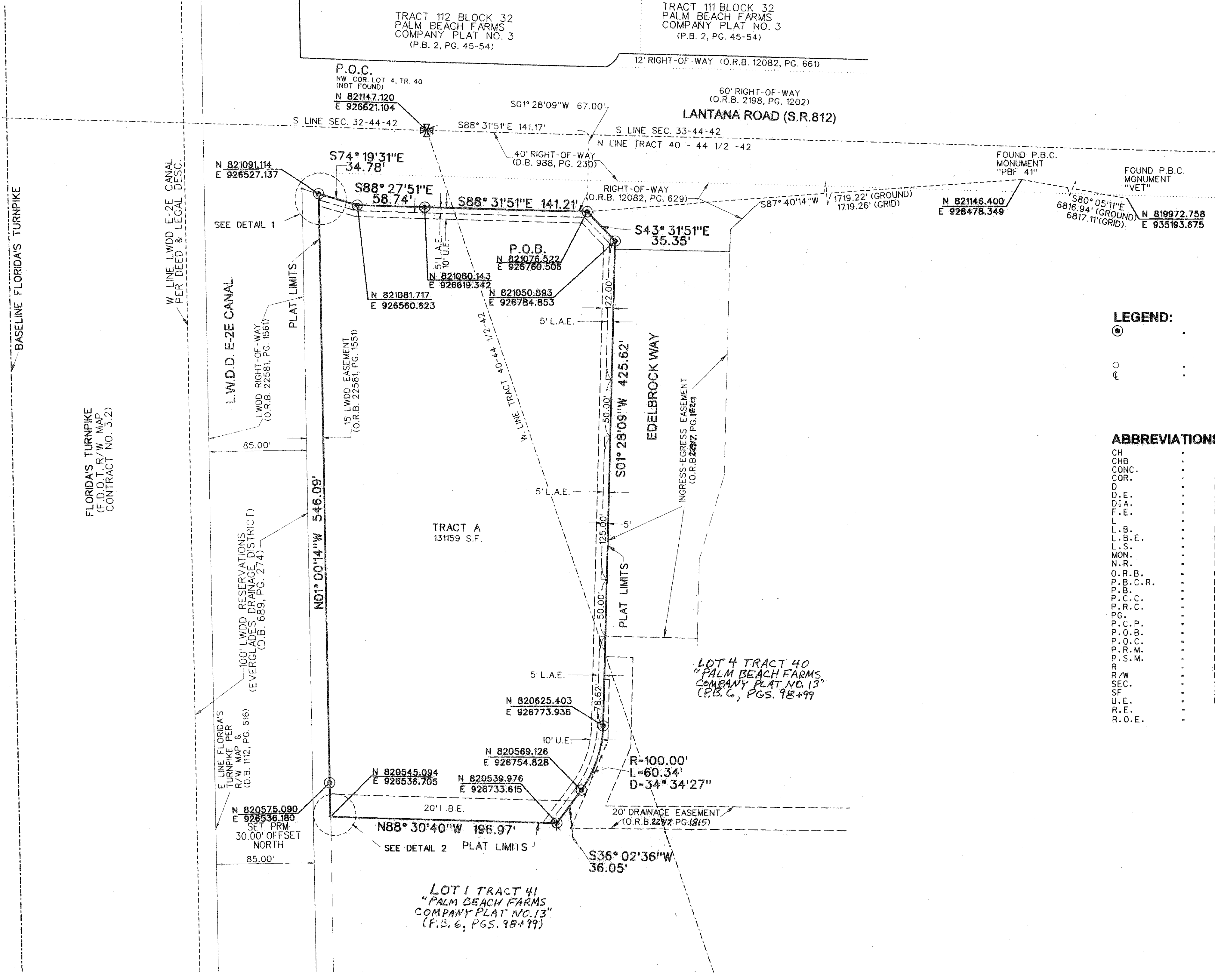
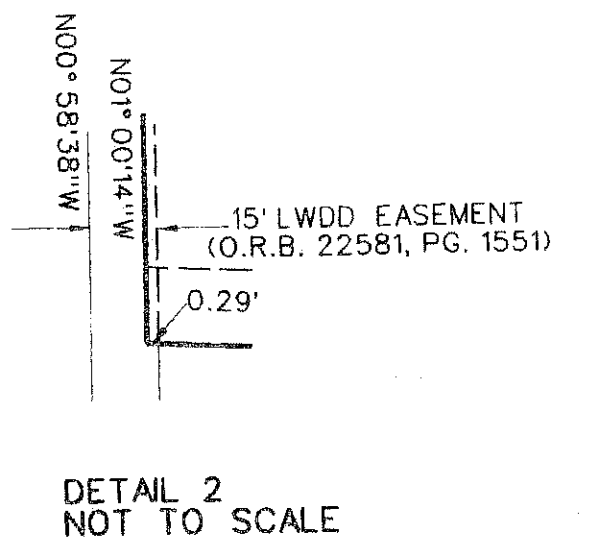
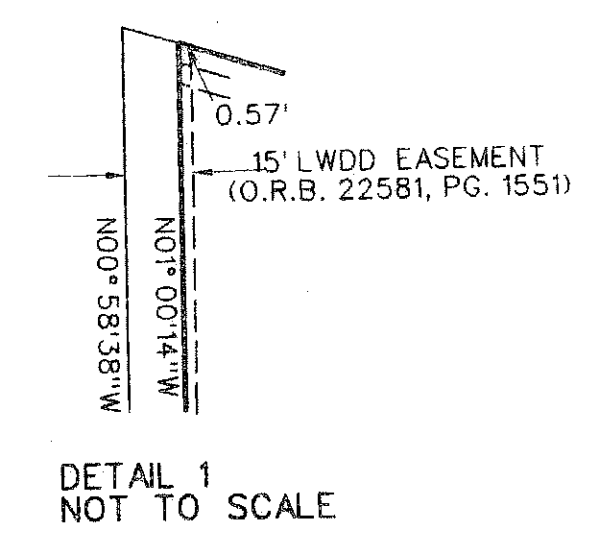


LANTANA FARMS M.U.P.D.

A REPLAT OF PORTIONS OF LOT 1, TRACT 41 & LOT 4, TRACT 40
 "PALM BEACH FARMS COMPANY PLAT NO. 13" (P.B. 6, PGS. 98-99, P.B.C.R.),
 HIATUS BETWEEN TOWNSHIP 44 & 45 SOUTH, RANGE 42 EAST, PALM BEACH COUNTY, FLORIDA.
 MAY, 2008



- LEGEND:**
- ⊙ SET P.R.M. (UNLESS OTHERWISE NOTED) - ALUMINUM DISK STAMPED •LB7264 IN 4" DIAMETER CONC. MON.
 - P.C.P.
 - CENTERLINE

- ABBREVIATIONS:**
- CH CHORD
 - CHB CHORD BEARING
 - CONC. CONCRETE
 - COR. CORNER
 - D DELTA (CENTRAL ANGLE)
 - D.E. DRAINAGE EASEMENT
 - DIA. DIAMETER
 - F.E. FLOWAGE EASEMENT
 - L ARCLength
 - L.B. LICENSED BUSINESS
 - L.B.E. LANDSCAPE BUFFER EASEMENT
 - L.S. LICENSED SURVEYOR
 - MON. MONUMENT
 - N.R. NON-RADIAL
 - O.R.B. OFFICIAL RECORDS BOOK
 - P.B.C.R. PLAT BOOK
 - P.B. PLAT BOOK
 - P.C.C. POINT OF COMPOUND CURVATURE
 - P.R.C. POINT OF REVERSE CURVATURE
 - PG. PAGE
 - P.C.P. PERMANENT CONTROL POINT
 - P.O.B. POINT OF BEGINNING
 - P.O.C. POINT OF COMMENCEMENT
 - P.R.M. PERMANENT REFERENCE MONUMENT
 - P.S.M. PROFESSIONAL SURVEYOR & MAPPER
 - R RADIUS
 - R/W RIGHT-OF-WAY
 - SEC. SECTION
 - SF SQUARE FEET
 - U.E. UTILITY EASEMENT
 - R.E. ROADWAY EASEMENT
 - R.O.E. ROOF OVERHANG EASEMENT